

2014 CATALOG



1-800-263-3557

Sacor Inc.

GuldenOphthalmics

COLOR VISION



HRR Pseudoisochromatic Plates

- Congenital and Acquired Testing

15251 -



Ishihara 14 Plate Book

15177 -

Ishihara 24 Plate Book

15121 -

Ishihara 38 Plate Book

15125 -



Magnetic Color Vision Tests

- Munsell Color System
- Includes "C" Daylight Glasses
- Easy to use Magnetic Wand

Magnetic Farnsworth Dichotomous D-15

15106 -

Magnetic Lanthony Desaturated D-15

15107 -

Magnetic Combination D-15 Color Test

15108 -



"C" Daylight Glasses™

- Corrects Normal Incandescent Light to Daylight Illumination
- Precise Type "C" Illumination
- Provides Accurate Color Test Results
- Compatible with All Color Test

15115 -

COLOR VISION



Farnsworth Lantern Flashlight

- 9 Interchangeable Filters
- Accurate
- Inexpensive Substitute
- Portable

15171



Farnsworth Dichotomous D-15 Lanthony Desaturated D-15

- Munsell Color System
- Quick and Easy to remove
- Includes "C" Daylight Glasses

Farnsworth 15126

Lanthony 15127

Combo D-15 Color Test

Farnsworth / Lanthony 15130

Eye Conformers / Spheres / Shields



PMMA Eye Spheres – (Sterile)

- 14250 – 10mm
- 14251 – 12mm
- 14252 – 14mm
- 14253 – 16mm
- 14254 – 18mm
- 14255 – 20mm
- 14256 – 22mm



PMMA Eye Conformers – (Sterile)

- 14264 – Small No Holes
- 14265 – Medium No Holes
- 14266 – Large No Holes
- 14267 – Small with Holes
- 14268 – Medium with Holes
- 14269 – Large with Holes



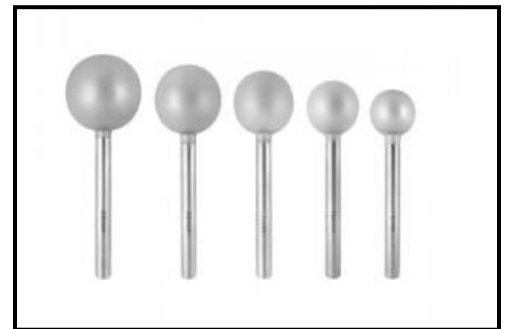
Silicone Eye Spheres – (Non-Sterile)

- 14351 – 12mm
- 14352 – 14mm
- 14353 – 16mm
- 14354 – 18mm
- 14355 – 20mm
- 14356 – 22mm



PMMA Orbital Implant Sizer Kit Disposable (Non-Sterile)

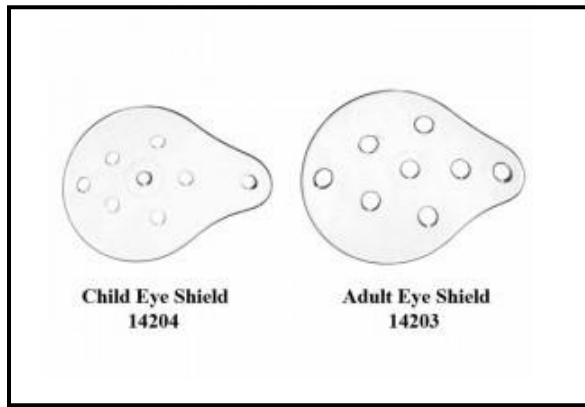
- 14170 – 14, 16, 18, 20mm Set



Stainless Steel Orbital Implant Sizer Kit Reusable Autoclavable (Non-Sterile)

- 14171 – 14, 16, 18, 20, 22mm Set

Eye Conformers / Spheres / Shields



PMMA Eye Shields

- Shatterproof Polycarbonate Plastic

14203 – Adult 12 Pack

14204 – Child 12 Pack



Foam Lined Eye Patch Shield

- Soft Lined Foam Latex Free

15364 –

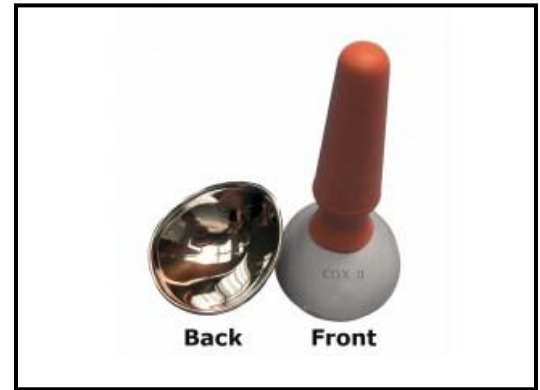


Dual Foam Lined Eye Shields

- Soft Lined Foam Latex Free
- Comfortable Adjustable Headband
- Shatterproof Polycarbonate Plastic

14102 –

14103 – 12 Pack



Cox II Laser Eye Shields

- For Protection of the Patient / Personnel
- Non-reflective Surfaces Disperse Laser Light
- Used for Skin Resurfacing or Incision Procedures

21261 – Extra Small !

21262 – Small

21263 – Medium

21266 – Large



Autoclavable Ocular Shields

23204 –



Durette III External Eye Laser Shields

- Includes 1 assembled pair of external shields and extras. Total parts comprise of 2 metal cups, 4 nasal & 4 temporal plastic attachments, 2 elastic headbands and a medium plastic sterilizing tray

21445 –

Eye Conformers / Spheres / Shields



Durette IV External Eye Laser Shields

- Includes 1 assembled pair of external shields and extras. Total parts comprise of 2 metal cups, 2 nasal & 2 temporal metal attachments, 2 elastic headbands and a medium plastic sterilizing tray

21555



Symblepharon Rings

- The Symblepharon Rings prevent adhesions and shortening or retraction of the fornices and cul-de-sacs without touching the cornea

14345 – Small

14346 – Medium

14347 – Large



Suction Cups

- Traditional large red suction cups for extracting conformers and laser shields

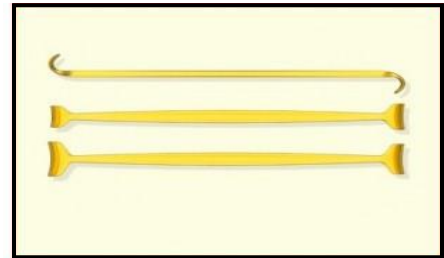
23012 – 12 Pack



Durette Plastic Eye Goggles

- Used with light that is usually created by fluorescent lamps, bright LEDs or diachronic filament bulbs. Visible violet light in the range of 405-420

23442



Autoclavable Desmarres Lid Retractor

- Desmarres Lid Retractor used for retracting eye lids
- Yellow color makes them easy to locate and see through

23311



Jaeger Lid Plate

- Acrylic jaeger lid plate, concaved with small & medium ends 22 – 25mm

16102 –



Autoclavable Jaeger Lid Plate

- Autoclavable jaeger lid plate in yellow color for easy locating and see through

23293 –

Consumables



Chinrest Paper

- 1-3/4 x 5-1/8

15326 – 500 Pack



Fluorescein Glo Strips

- 1 mg sterile strips
- Lint free rounded tips

NOT AVAILABLE IN CANADA

152F5 – 300 Pack



Schirmer Tear Flow Strips

- Printed mm scale
- Sterile strips

152T5 – 100 Pack

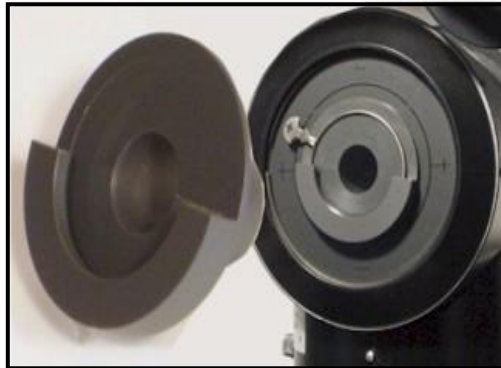
Contact Lens



Contact Lens Check & Keratometer Calibrator

- Easily mounts on most keratometers & Slit Lamps
- Eliminates a need for a radiuscope
- Check for warpage or any changes to the base curve & calibrate your keratometer

15179 - .



Keratometer Range Extender

- Extends range; flatter to 30.87D or steeper to 60.62D.
- Attaches easily for temporary or permanent use
- Eliminates bothersome taping & alignment of lenses

15180 ·



Contact Lens Polisher Kit

- Cordless & easy to use
- Fits comfortably in your hand
- 1,400 rpm motor saves time
- Includes flat and cone shaped foam polishing pads

15172 -

Diagnostics



Automated Confrontation Test

- Automated LED gross confrontational visual field tester
- Fast and accurate
- Both eyes can be tested in less than a minute

17002



Eye View™ Visualizing Scope

- Gives patients a fascinating view of floaters and cataract opacity in their eyes
- Good educational tool
- Easy to use

15220



Dual Luedde Exophthalmometer

- Small compact size
- Hard shell case included

16103 -



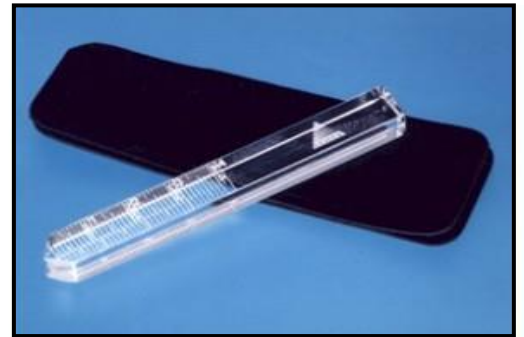
R-50 Near Point Accommodation Rule

- Easy to read
- Includes acuity cards
- Durable

15150 -

Accommodation Cards (5 Pack)

15201 -



Luedde Exophthalmometer

- Pocket size
- Accurate parallax correction
- Protective leather case included

16104 -

Diagnostics



Neutral Density Bar

- Six standard ND levels
- Convenient "prism bar" format
- Compact, slides into pocket
- Quantifies APD accurately

15118 ·



Stereo Acuity Test

- Includes adult and pediatric polarized viewers
- Graded circle test from 400 sec to 20 sec
- Very precise
- Answer key on back cover

15211 – Fly

15219 – Butterfly

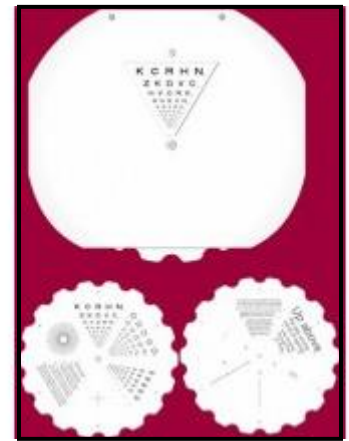


Wraparound Polarized Glasses

- Adult and child sizes
- Used with the stereo fly and Butterfly tests

15199 – Child

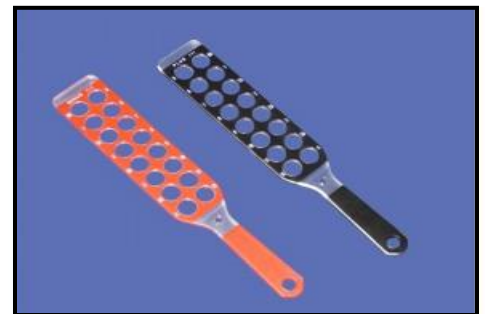
15200 – Adult



Phoropter Roto Chart

- Astigmatic Wheel
- English & Spanish continuous text
- Cross Hatch target

15151 -



Retinoscopy Racks

- High quality lenses
- Plus (+) and minus (-) lenses

15161



Large Aperture Retinoscopy Racks

- High quality lenses
- Plus (+) and minus (-) lenses
- 6 piece set

15162 ·

Diagnostics



Digital PD Ruler

- Accurate and responsive digital display
- Automatic shut off when placed on level surface

17005



Digital Pupilmeter w/ Vertex Distance

- Measures binocular and monocular pupillary distance (PD)
- Automatic standby

17006



Reusable Penlight

- 2 "AAA" batteries included

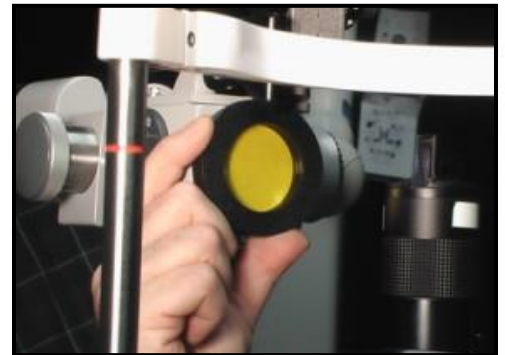
15116



Diagnostic Eye Template

- Individual eye components for patient education

15178 -



Slit Lamp Yellow Filter

- Used to detect subtle staining
- Better visualization of RGP fluorescein patterns

15192 -



Large Neutral Density Bar

- Six standard ND levels
- Convenient "prism bar" format
- Lighter than competitor versions
- Quantifies APD accurately

15117-

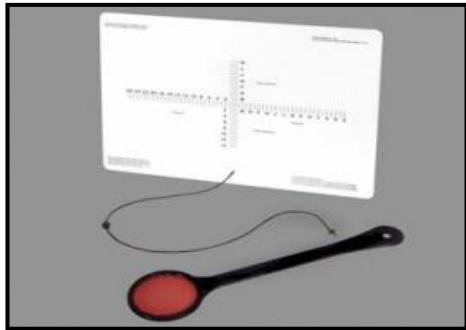
Diagnostics



Plastic Tape Measure

- Light weight, pocket size
- Spring retractable

16105 -



Eye Alignment Near Card

- Quantitative test
- Measures vertical & horizontal deviation
- Portable & easy to use
- Maddox included

15114-



Ohlson VSEF

- The yellow filter increases the visibility of the fluorescein pattern
- The red lens increases the visibility of lissamine green staining on the bulbar conjunctiva

12135 -



Penlight/Transilluminator 5x Magnifier

- Convenient and saves time

15204 -

Drop Trays / Organizers



Disposable Spray Caps

- Replaceable caps for standard ophthalmic drop bottles
- Use for Mydriatic, Anesthetic, etc

15195 - 12 Pack



Strip Caddy/Disposal Kit

- Convenient & safe way to dispose strips
- Small compact design saves space
- Strips and disposable bags included

15205 -



Opticare Eye Drop Dispenser

- Helps patients use their eye drops effectively
- Holds the eye lid open
- Available in 5 colors

15196-



Tip Cleaner Caddy

- Quickly disinfects tonometer tips
- Removable, refillable cup
- Easily maintained by a technician
- Keeps drops organized

15169-



Caddy 6

- Keeps drops organized
- Rear key holes for wall mounting
- Measures 3"x5"x1"

15168-



Opticare Eye Drop Dispenser (10 Pack) Display

- Great counter display

15197- 10 Pack

Drop Trays / Organizers



Lagophthalmos Kit

- Kit includes moisture goggles for day
- Headband device to keep eye/eyes closed at night
- Eliminates the need for taping
- Storage case included

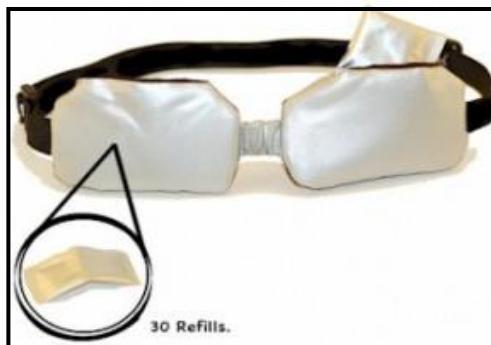
15170 -



EyeGenie Kit

- Improves the care of patients suffering from inflamed eyelids

14227 -



EyeGenie Refills (30 pack)

- Refill warming pads to be used with the EyeGenie

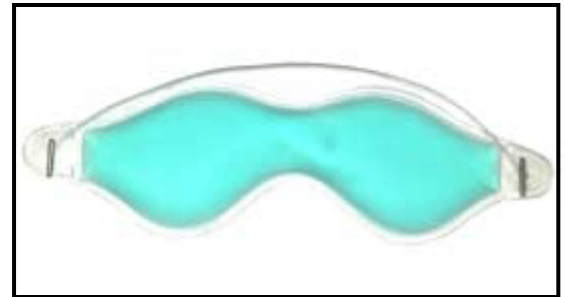
14228 ·



Lasik Eye Guard

- Very comfortable, adjustable
- Anti-fog ventilation holes
- Logo imprinting available

15124 – 10 Pack



Gel Eye Patch & Mask

- Easy to heat or cool
- Soothes tired eyes

14225 – 2 Pack

Instruments & Accessories



Slit Lamp Breath Shield

- Protect yourself and your patients from respiratory illness
- Easy to install
- Fits most Slit Lamps

14226 -



MG Expressor Kit

- Performed easily on outer lid with or without slit lamp
- Immediate patient relief post procedure
- Includes 2 gel eye masks, lid plate tool, expressor roller tool & 10 disposable expressor covers

16111 -

Roller Covers

16C11 - (25 Pack)



Curved Locking Tweezers

- Has two slots for holding punctum plugs

16117 -



Slit Lamp Elbow Rest

- Keeps users arm & hand steady for holding lenses and filters
- Elevates from 9 to 14.5 cm
- Twist to lock position

15194-



Gutierrez MG Expressor Lid Plate PLUS

- Comfortable for the doctor in a natural position when expressing the meibomian glands
- 30mm scale used to measure pupil size, iris diameter and other measurements

16P11 -

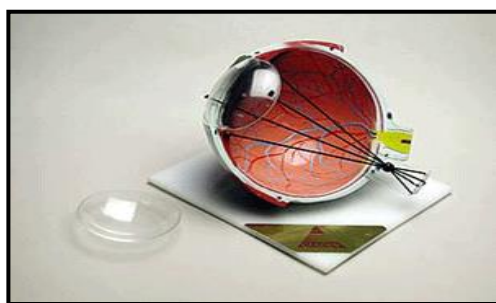


Gutierrez MG Expressor Lid Plate S.S.

- Comfortable for the doctor in a natural position when expressing the meibomian glands
- Can be sterilized in an autoclave

16S11 -

Models



Astigmatism Eye Model

- Demonstrates Astigmatism
- Myopia
- Hyperopia
- Refraction error

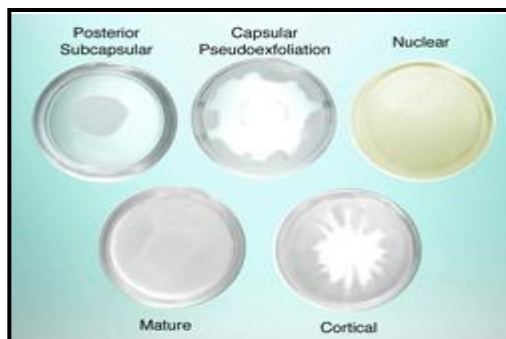
15123 -



Cataract Eye Model

- Includes 5 interchangeable lenses
- Subcapsular
- Capsular
- Mature
- Cortical
- Nuclear

15129 -



Cataract Lenses

- Includes 5 interchangeable lenses
- Subcapsular
- Capsular
- Mature
- Cortical
- Nuclear

15119 -



Cornea Model

- Includes 5 interchangeable corneas
- Keratoconus
- Bullous Keratopathy
- Fuch's Endothelial Dystrophy
- Recurrent Corneal Erosion
- Normal

15182 -



IOL Eye Model

- Includes 6 interchangeable corneas
- IOL and Toric implants of clear posterior capsule, cloudy capsule & post YAG posterior capsulotomy

15149 -



IOL Lenses

- IOL and Toric implants of clear posterior capsule, cloudy capsule & post YAG posterior capsulotomy

15147 -

Models



Complete Eye Model

- Provides a unique opportunity to demonstrate myopia and hyperopia through adjustment of the focal rays
- Helps in educating patients on the anatomy of the human eye

15152 -



Punctum Plug/Tear Duct Model

- Shows the Tear Ducts
- Lower duct is open
- Punctum Plug can be inserted

15165 -



Timberlake Training Eye Model

- Improve the teaching of Fundoscopy Skills
- Changeable pupil sizes
- Multiple retinal pathologies

15173 -



Small Eye Model

- Assists the ophthalmic professional in educating patients in the anatomy of the human eye

15222 -



Lasik Eye Model

- Assists the ophthalmic professional in educating patients about Lasik surgery procedures

15120 -



Detachment Eye Model

- Assists the ophthalmic professional in educating patients in the detachment of either the vitreous or the retina

15163 -

Models



Siepser Vitreous Floater Demonstrator

- Quickly & easily explain "shadowing"
- Measures 3 inches in diameter

15153 -



Siepser Hemorrhage Demonstrator

- Demonstrates the effects of vitreous hemorrhage & head position

15224-



Clear Visible Ear Model

- Full size model of human ear
- Instructive education card included

15253 -



VTD Model

- AMD
- Diabetic Retinopathy
- Glaucoma

15223 -

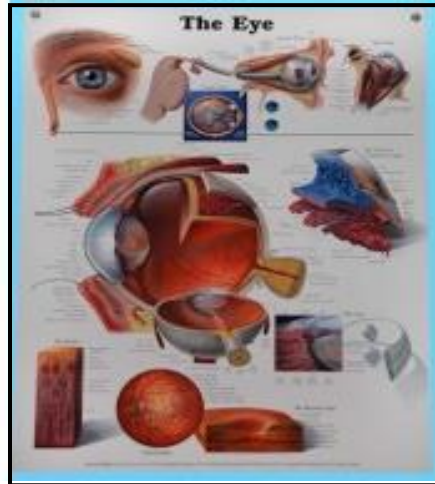


Diabetic Eye Model

- Demonstrates the effects of diabetes on the kidneys, arteries, nerves & retina

15252 -

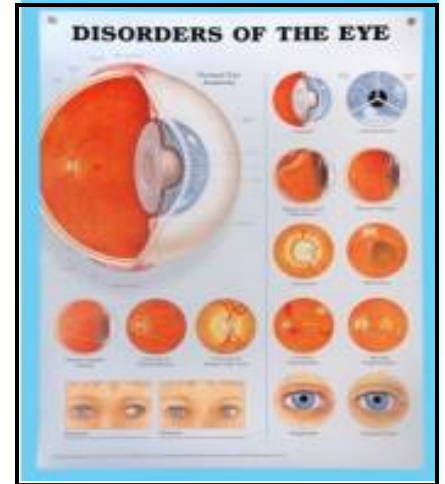
Educational Posters



Eye Poster

- Highly instructive and useful for both patients and office staff
- Measures 20"x 26"

15254 -

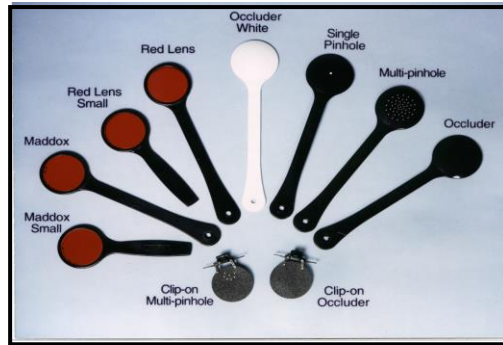


Eye Disorder Poster

- Shows a detailed, clear cross section of the eye
- Measures 20"x 26"

15255 ·

Occluders



Single Occluders

- 12110 Occluder Black (short)
- 12112 Occluder Black (long)
- 12113 Maddox (long)
- 12114 Maddox (short)
- 12115 Red Lens (long)
- 12116 Red Lens (short)
- 12117 Occluder White
- 12127 Clip-on Multiple Pinhole
- 12128 Clip-on Occluder
- 12129 Single Pinhole
- 12130 Multiple Pinhole



Double Occluders

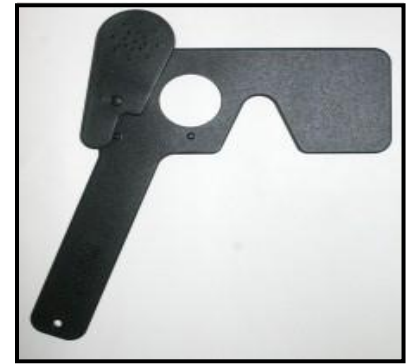
- 12121 Occluder & Red Lens
- 12122 Occluder & Maddox
- 12126 Combo Occluder
- 12124 Double Maddox
- 12125 Maddox Red Lens



Lewerenz Accommodation Maddox

- Calibrated scale in both centimeters and dioplers

12137 -



Lorgnette Occluder

- Easy to use
- Suitable for any age
- Saves time

12133 -



Spielmann Occluder

- For clinic or office
- Eliminates retinal rivalry
- Enhances visual acuity testing

12120 -



Berens Pinhole Test

- Combines a standard pinhole and an eye dominance test

15102 -

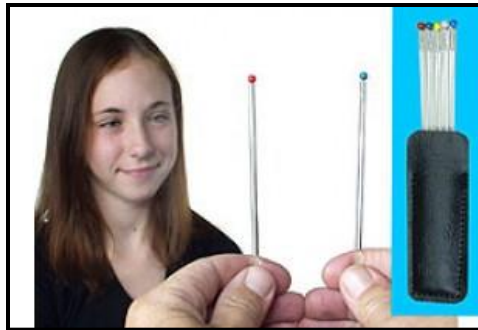
Pediatric Tools



Parrot Opaque Occluder Glasses

- Add some fun to your tests with colorful parrot fun occlude glasses
- Includes 2 glasses 1 left, 1 right

15365 -



Color Fixation Sticks

- Test ocular motility
- Test confrontation visual fields
- Case included

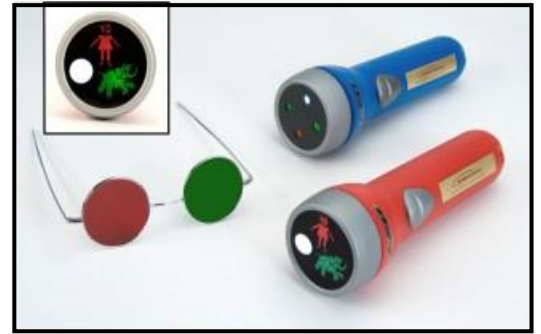
15176



Brock String

- Used to enhance convergence ability

15133 -



LED Three Character Test

- High durable quality
- Reversible red and green glasses
- Batteries included

15305 -



Pediatric Fixation Pack

- Set of four fixation targets
- Perfect for young and non verbal patients
- Penlight included

15132



Optokinetic Flag

- Simple design
- No patient cooperation required
- Neurodegenerative Disease

15154 -

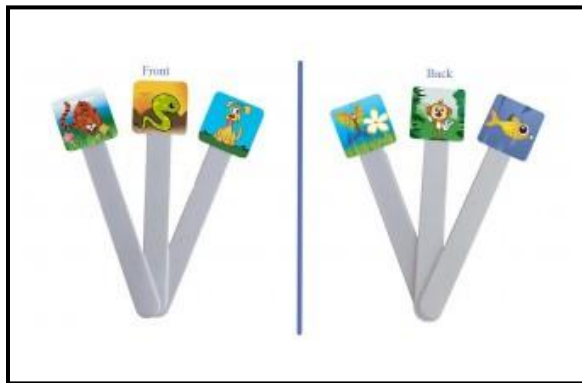
Pediatric Tools



Pediatric Fixation Sticks 3 Pack

- New and improved printed images
- 12 different colored images
- Calibrated for near vision

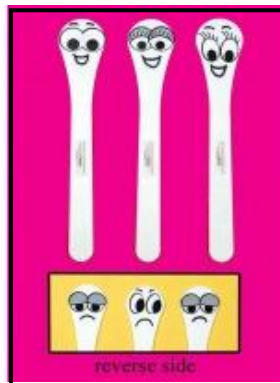
15314 – 3 Pack



Fixi-Stix 3 Pack

- 3D wiggle pictures
- Stimulation targets for the young patient
- Combination of 6 different images

15312 – 3 Pack



Face Fixation Sticks 3 Pack

- Calibrated for Near Vision
- Stimulation targets for the young patient
- Combination of 6 different images

15315 – 3 Pack



Flashing Butterfly Fixation Stick

- Simulation targets for the young patient
- On / Off button

15203 –



Flashing Fixation Sticks 2 Pack

- Simulation targets for the young patient
- Easy twist on and off
- Replaceable watch battery

15325 – 2 Pack

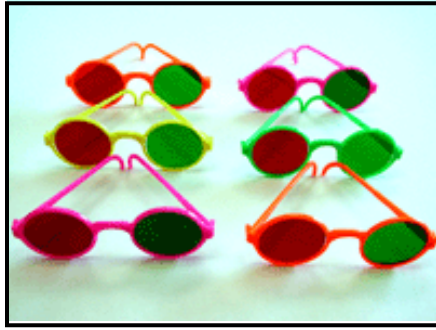


Pediatric Fixation Wand

- Aids in visual testing and therapeutic situations

15215 –

Pediatric Tools



Red and Green Pediatric Glasses

- Used for worth 4 dot and 3 character tests
- Designed for children

15321 – 6 Pack



Hopping Accomodative Facility Card (12)

- Vision therapy activities designed for use with accommodative & ocular motor therapies

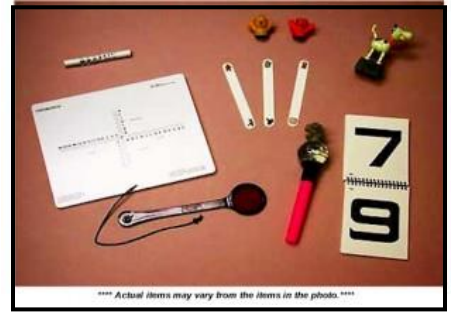
15331



Amblyopia Rock Cards (Set of 20)

- Reusable with erasable markers
- Comes with instructions and red/green spectacles

15334



Pediatric Screening Kit

- Includes a eye alignment near card with Maddox rod, pediatric chronister pocket acuity card chart, and pediatric fixation pack with re-useable penlight

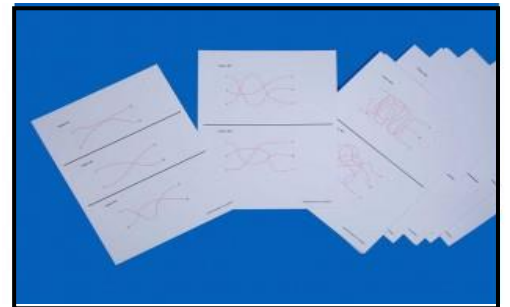
15311



Red/Green Number Search 1-50 & 1-100 (20)

- Reusable with erasable markers
- Includes instructions and red/green spectacles

15335

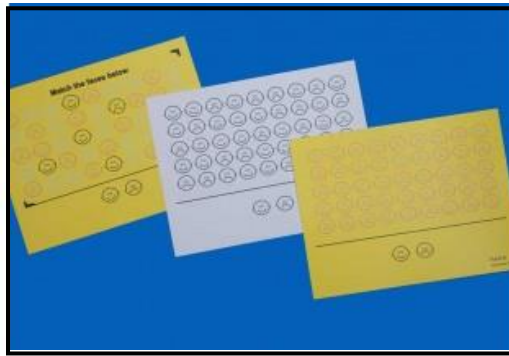


Red Line Tracing Cards (Set of 26)

- Vision therapy activities designed for use with accommodative & ocular motor therapies
- Includes instructions and red/green spectacles

15336 -

Pediatric Tools



Face Form (Set of 3)

- Activities are designed to be accommodative demanding & interactive
- All cards are laminated (coated)

15332 -



Hopping Vision Therapy Cards

- Complete set of our vision therapy cards shown on page 22 & 23

15330



Number Search 1-50 & 1-100 (Set of 20)

- Includes instructions and red/green spectacles
- All cards are laminated (coated)

15333 -



Pediatric Chronister Pocket Acuity Chart

- Quick and easy to use
- Laminated & pocket size

15131-

Practice Eyes



I-BORG Practice Face

- Realistic shape & dimensions
- Central corneal thickness 0.5mm
- Peripheral corneal thickness 0.8mm

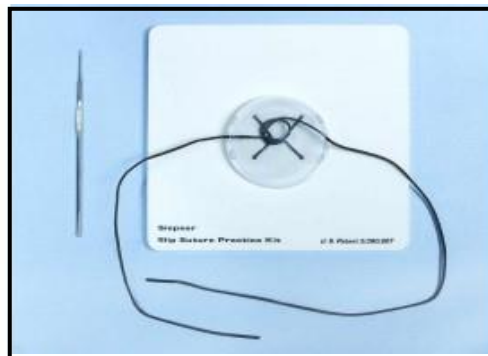
17102 -



Phak-I

- Disposable Eyes
- Central corneal thickness 0.5mm
- Peripheral corneal thickness 0.8mm
- 8mm "dilated" pupil

17004 - (4 pack)



Siesper Slit Suture Kit

- Easy to learn
- Includes full instruction CD

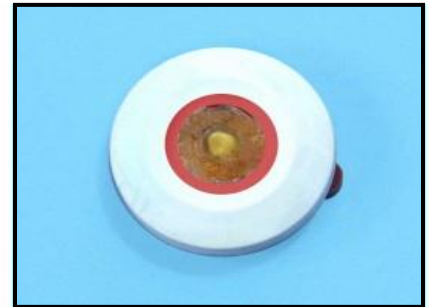
16110 -



Phaco Practice Patient

- Includes half head to hold the eyes, a plastic tray to contain the head & liquids & a pair of disposable practice eye

15186 -



Phaco Practice Eyes

- Disposable Eyes
- Easily practice the basic steps of phaco surgery

15187 - (10 pack)



Redi-Eye

- Practice indirect Ophthalmoscopy & Photocoagulation
- Slit Lamp attachment
- Replacement retinal films available

15207 -

15217 - (10 Pack Films)

Practice Eyes



PPE Normal Retina 2mm Eye

- Realistic shape & dimensions
- Filled with mineral oil
- 2mm “dilated” pupil pathology

17010 -



PPE VR Surgery Eye

- Realistic shape & dimensions
- Used to demonstrate equipment and tools to practice VR surgery

17012 -



PPE Anterior Chamber Eye

- Realistic shape & dimensions
- Filled with mineral oil
- Anterior chamber pathology

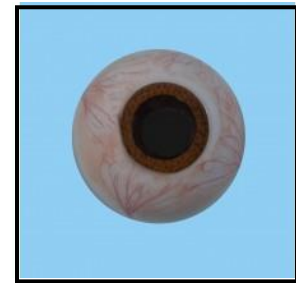
17014 -



PPE Normal Retina 8mm Eye

- Realistic shape & dimensions
- Filled with mineral oil
- 8mm “dilated” pupil pathology

17011 -



PPE Diabetic Retinopathy Eye

- Realistic shape & dimensions
- Filled with mineral oil
- Diabetic retinopathy pathology

17013 -



PPE Diabetic Retinopathy Eye

- Realistic shape & dimensions
- Filled with mineral oil
- Retinal detachment pathology

17015 -

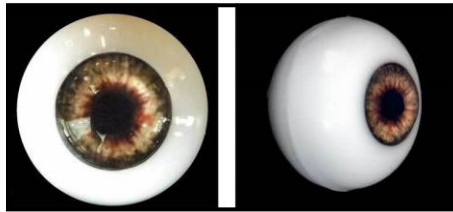
Practice Eyes



PPE Slit Lamp Holder

- Made of high quality acrylic
- Attaches to any slit lamp
- Mounting hardware included

17016 -



Silicone Set-up Eye Brown

- Made of Silicone
- Ideal for training and equipment set-up

17017 -

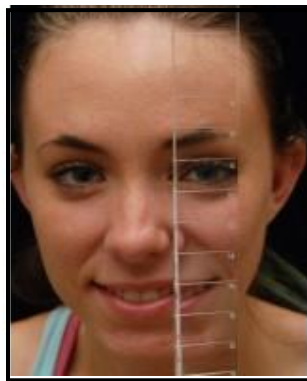


Silicone Set-up Eye Blue

- Made of Silicone
- Ideal for training and equipment set-up

17018 -

Prism Bars



EZ View Prism Bars

- Improves vectographic results
- Reduces washout and eliminates reversal
- Diopters in corner viewing plan for easier viewing results
- Includes leather pouch
- Available in vertical or horizontal

11113 – Small Vertical

- 0.5-1-1.5-2-2.5-3-3.5-4-5-6-7-8Δ

11116 – Horizontal

- 1-2-4-6-8-10-12-14-16-18-20-25-30-35-40-45Δ

11117 – Vertical \$105.00

- 1-2-3-4-5-6-8-10-12-14-16-18-20-25-30Δ



EZ View Prism Bar Sets

- Improves vectographic results
- Reduces washout and eliminates reversal
- Diopters in corner viewing plan for easier viewing results
- Includes 1 horizontal and 1 vertical prism bars
- Horizontal = 1-2-4-6-8-10-12-14-16-18-20-25-30-35-40-45Δ
- Vertical = 1-2-3-4-5-6-8-10-12-14-16-18-20-25-30Δ

11314 – Leather Pouches

11L14 – Hard Molded Case



LB- Large Prism Bars

- Improves vectographic results
- Reduces washout and eliminates reversal
- Includes leather pouch
- Available in vertical, horizontal, or in a set with both

11111 – Large Vertical

- 1-2-3-4-5-6-8-10-12-14-16-18-20-25Δ

11112 – Large Horizontal

- 1-2-4-6-8-10-12-14-16-18-20-25-30-35-40Δ

11315 – Horizontal/Vertical



Combination Horizontal and Vertical Prism Bar

- Provides accurate measurement of ocular deviation
- Sturdy rails for smooth sliding of the horizontal bar
- Used together or separately
- Includes leather pouch
- Horizontal = 1-2-4-6-8-10-12-14-16-18-20-25-30-35-40-45Δ
- Vertical = 1-2-3-4-5-6-8-10-12-14-16-18-20-25-30Δ

11313 –

Prism Sets



S-16 Prism Set

- Solves the problem of birefringence
- Made of high quality plastic
- Includes sizes 1/2-1-2-4-6-8-10-12-15-20-25-30-35-40-45-50Δ & Red Lens
- Hard molded case

11L16 -



S-16U Universal Prism Set

- Solves the problem of birefringence
- Made of high quality plastic
- Includes sizes 1/2-1-2-4-6-8-10-12-15-20-25-30-35-40-45-50Δ & Red Lens
- Hard molded case

11317 -



MS-10 Prism Set with Maddox Rod

- Solves the problem of birefringence
- Includes sizes 1/2-1-2-4-6-8-10-15-20-25Δ & Maddox rod
- Hard molded case

11310 -



S-22 Prism Set

- Solves the problem of birefringence
- Made of high quality plastic
- Includes sizes 1/2-1-2-3-4-5-6-7-8-9-10-12-14-16-18-20-25-30-35-40-45-50Δ & Red Lens
- Hard molded case

11L22 -



S-22U Universal Prism Set

- Solves the problem of birefringence
- Made of high quality plastic
- Includes sizes 1/2-1-2-3-4-5-6-7-8-9-10-12-14-16-18-20-25-30-35-40-45-50Δ & Red Lens
- Hard molded case

11323 -



S-4 Prism Set

- Solves the problem of birefringence
- Includes sizes 5-10-15-20Δ & Red Lens
- Hard molded case

11304 -

Prism Sets



S-8 Prism Set

- Solves the problem of birefringence
- Includes sizes 2 each 5-10-15-20 Δ & 1 red lens
- Made of high quality plastic
- Hard molded case

11308 -



SS-8 Prism Set

- Solves the problem of birefringence
- Includes sizes 3-5-8-10-12-15-20-25 Δ & 1 red lens
- Made of high quality plastic
- Hard molded case

11318



S-16 Magnetic Stick Prism Set

- Compact case takes up less counter space
- Strong imbedded magnets attach easily to supplied magnetic handles
- Use as stick prisms or individually
- Includes sizes 1/2-1-2-4-6-8-10-12-15-20-25-30-35-40-45-50 Δ Red Lens and two magnetic stick handles
- Additional handles available
- Made of high quality plastic
- Hard molded case

11L17 -



S-22 Magnetic Stick Prism Set

- Compact case takes up less counter space
- Strong imbedded magnets attach easily to supplied magnetic handles
- Use as stick prisms or individually
- Includes sizes 1/2-1-2-3-4-5-6-7-8-9-10-12-14-16-18-20-25-30-35-40-45-50 Δ & Red Lens and two magnetic stick handles
- Additional handles available
- Made of high quality plastic
- Hard molded case

11L23 -

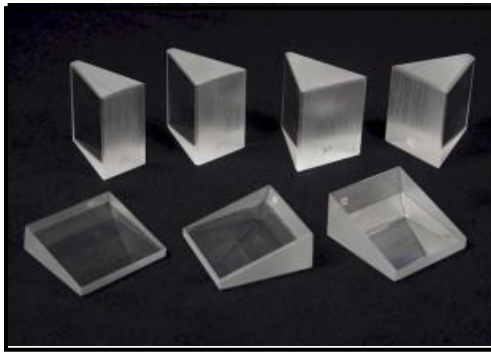


Bishop Alignment Prism Set

- Designed to provide advantages in measuring large angle strabismus
- Includes sizes 1/2-1-2-4-6-8-10-12-15-20-25-30-35-40-45-50 Δ Red Lens

11L17 -

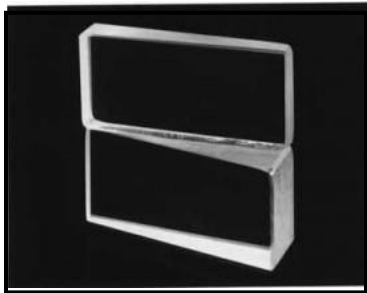
Prisms



Single Square Prisms

- Available sizes include 1/2-1-2-3-4-5-6-7-8-9-10-12-14-15-16-18-20-25-30-35-40-45-50Δ
- Made of high quality plastic

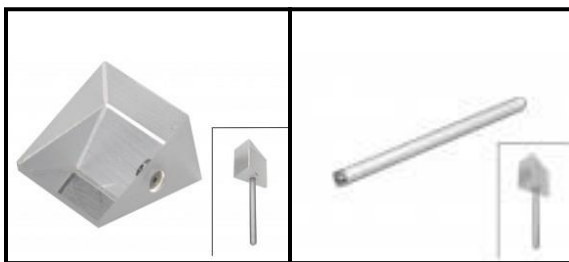
11101



Single Vergence Facility Prisms

- Used to test for binocular vision disorders and symptoms
- All diopter versions available
- Made of high quality plastic

11107



Single Magnetic Prisms / Stick Prisms

- Strong imbedded magnets
- Available sizes include 1/2-1-2-3-4-5-6-7-8-9-10-12-14-15-16-18-20-25-30-35-40-45-50Δ
- Made of high quality plastic

11201 – Magnetic Square Prism

11202 – Magnetic Stick

11204 – Magnetic Stick w/ Prism



Single Stick Prisms

- Use for vision therapy
- Available sizes include 1/2-1-2-3-4-5-6-7-8-9-10-12-14-15-16-18-20-25-30-35-40-45-50Δ
- 3 inch plastic handle
- Made of high quality plastic

11104



Single Vergence Facility Stick Prisms

- Used to test for binocular vision disorders and symptoms
- All diopter versions available
- 3 inch plastic handle
- Made of high quality plastic

11108



Single Magnetic Vergence Facility Prisms / Stick Prisms

- Strong imbedded magnets
- All diopter versions available
- Made of high quality plastic

11207 – Single VF

11208 – VF Stick w/ Prism

Surgical Tools



Magnetic Spuds

- Remove foreign bodies with minimal trauma
- Self contained magnetic field

16108 – Ellis

16109 – Dix



Eye Sphere Introducer

- Helps hold and then place eye spheres in enucleated or eviscerated eye orbits
- Designed for efficient accurate placement

16118 -



Small Tono Tip Cleaner

- Quick and easy to use
- Portable

15225 -



Biro Tonometers

- 26 point check
- U.S certification via AAO specs
- Plunger retractor installation available
- Includes 4 weights

13107 -

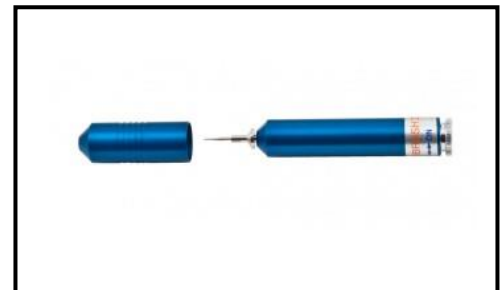
13110 – W/ Allen Modification



Tono Tip Cleaner

- Perfect for sterilizing tonometers tips

15175 -

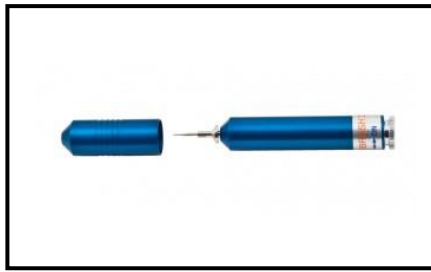


Algerbrush II Rust Ring Remover .5mm Burr

- Used to remove foreign bodies rust from the eye of a patient
- Low torque motor powered by one single "AA" battery
- Equipped with a 0.5mm burr

16120 -

Surgical Tools



Algerbrush II Rust Ring Remover 1mm Burr

- Used to remove foreign bodies rust from the eye of a patient
- Low torque motor powered by one single "AA" battery
- Equipped with a 1mm burr

16121



Algerbrush Replacement 1mm Burr

- Replacement 1mm burr for the Algerbrush II

16123 -



Algerbrush Chuck w/ 2.5mm Round Fine Diamond Burr

- 2.5mm round fine diamond burr with chuck used with the algerbrush II

16125 ·



Algerbrush Replacement .5mm Burr

- Replacement 0.5mm burr for the Algerbrush II

16122

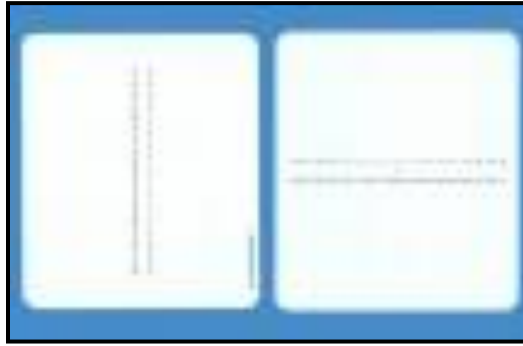


Algerbrush II Replacement Chuck

- Replacement chuck for the Algerbrush II

16124

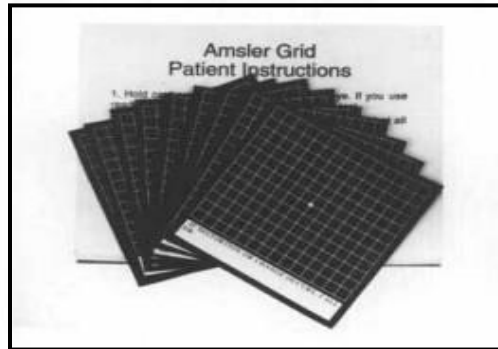
Test Cards



Modified Thorington Test Card

- Used to check the alignment of the eyes
- Helps diagnose uncrossed or crossed diplopia and RhyoP, LhyperP, RhyperP and LhypoP

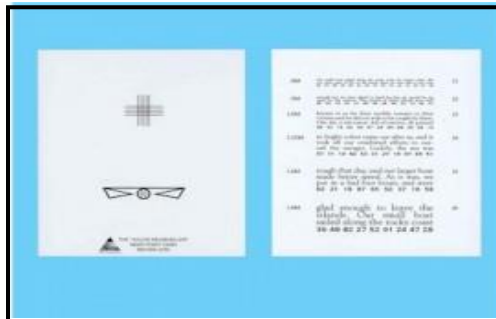
15111



Magnetic Modified Amsler Grid

- Self administered test for patients
- Valuable tool for detecting central visual field distortion

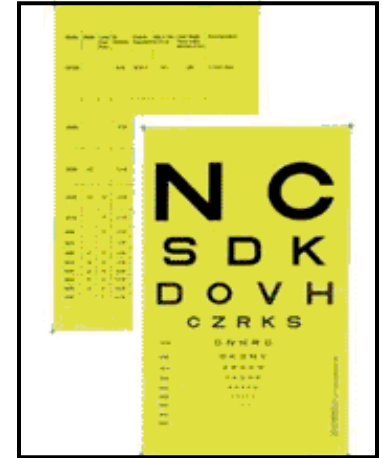
15301 – 10 Pack



Neumueller Card

- Print is designed in both “M” & “J” notation
- Print is crisp and sharp to insure quality acuity vision testing

15122 -



Eger Equivalent Card

- Includes reversible red & green spectacles
- Highly durable

15134



Wormington Card

- Used to measure a patients single letter near acuity & reading acuity

15135 – English Version

15128 - Spanish Version

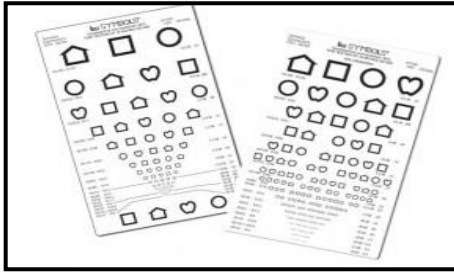


Near Point Card Set

- 2 double side card set

15303 -

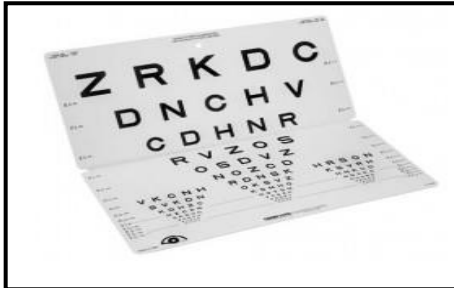
Test Cards



Lea Symbols Card

- Designed for testing patients visual acuity

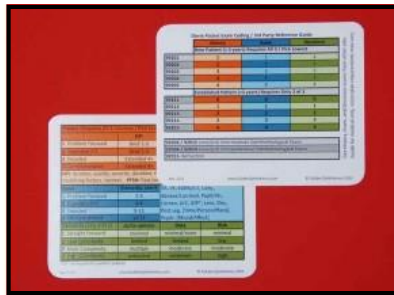
15340 -



Sloan Letters Folding Chart

- Folding eye chart with sloan letters optotypes
- Center hold for wall hanging
- 10 feet; 3 meter testing distance

15341-



Dovie CPT Coding Card

- Pocket sized reference card for CPT and HCPCS coding
- 2mil thick card

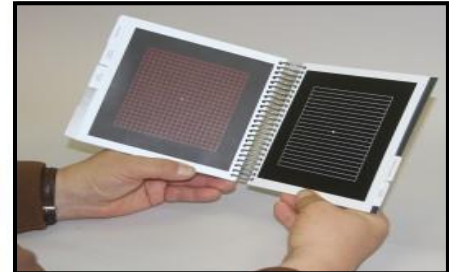
15208 -



Adult Near-Contrast Test Booklet

- Provides contrast sensitivity levels of 100,25,10,5 & 2.5 percent using Michelson measures

15361-



Amsler Grid Book

- Provides 7 Amsler grids and a score sheet

15362 -

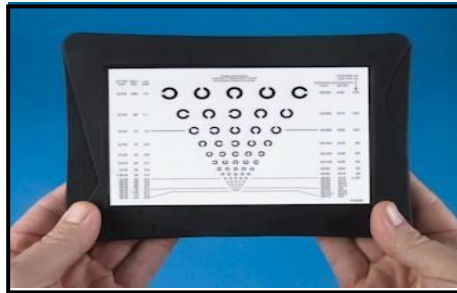
Illuminated Test Cards



Illuminated Amsler Grid Card

- LED backlit illuminated display
- 5.75" X 3.75" viewing area
- Includes AC power supply and "AAA" battery pack

15232



Illuminated Landot 'C' Card

- LED backlit illuminated display
- 5.75" X 3.75" viewing area
- Includes AC power supply and "AAA" battery pack

15238 -



Illuminated Lea Symbol Card

- LED backlit illuminated display
- 5.75" X 3.75" viewing area
- Includes AC power supply and "AAA" battery pack

15234 -



Illuminated Near Sloan Letter Card

- LED backlit illuminated display
- 5.75" X 3.75" viewing area
- Includes AC power supply and "AAA" battery pack

15233 -



Illuminated Near Lea Number Card

- LED backlit illuminated display
- 5.75" X 3.75" viewing area
- Includes AC power supply and "AAA" battery pack

15231 -



Illuminated Near 'E' Card

- LED backlit illuminated display
- 5.75" X 3.75" viewing area
- Includes AC power supply and "AAA" battery pack

15237 -

Illuminated Test Cards



Illuminated Near HOTV Letter Card

- LED backlit illuminated display
- 5.75" X 3.75" viewing area
- Includes AC power supply and "AAA" battery pack

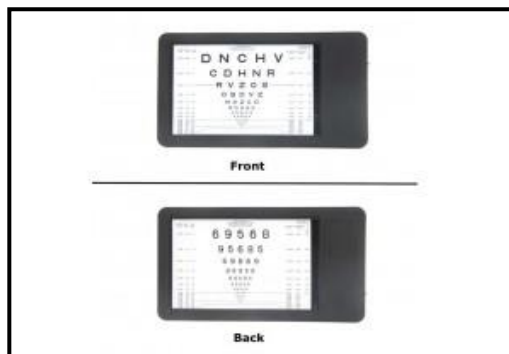
15239 -



Illuminated 3m Lea Number Card

- LED backlit illuminated display
- 5.75" X 3.75" viewing area
- Includes AC power supply and "AAA" battery pack

15236 -



2 Sided Illuminated Near Card

- 2 Sided LED letters and numbers
- This unit hold 2 cards
- Includes 120v power supply/adapter that charges the long life lithium battery

15260 -



Illuminated 3m Sloan Letter Card

- LED backlit illuminated display
- 5.75" X 3.75" viewing area
- Includes AC power supply and "AAA" battery pack

15235 -



Illuminated Card Rod Adaptor

- Allows the Illuminated Near Cards to be mounted on most phoropter rods quickly & easily

15250 -

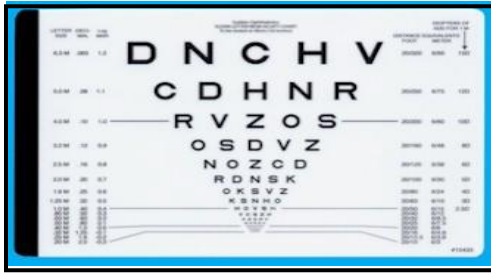


ESV 1200 Illuminated Cabinet

- LED lights illuminate across entire testing surface
- Compatible with a 9" X 14" charts
- CE and CSA listed

15366 -

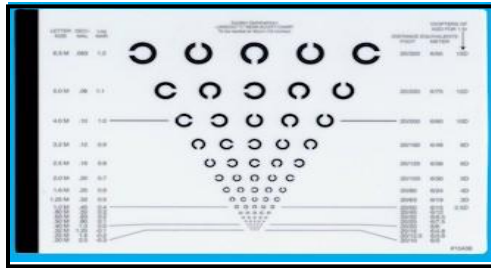
Illuminated Test Card Inserts



Illuminated Near Letter Card Insert

- Replaceable transparent insert for use with the Illuminated Test Card

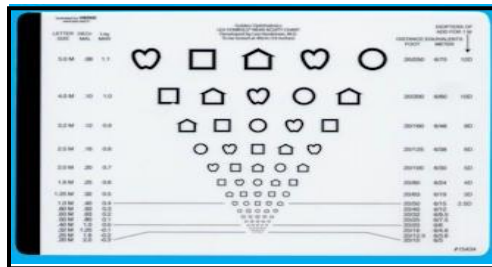
15433



Illuminated Landot "C" Card Insert

- Replaceable transparent insert for use with the Illuminated Test Card

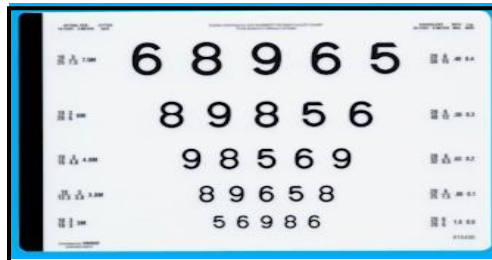
15438



Illuminated Lea Symbol Card Insert

- Replaceable transparent insert for use with the Illuminated Test Card

15434



Illuminated 3m Number Card Insert

- Replaceable transparent insert for use with the Illuminated Test Card

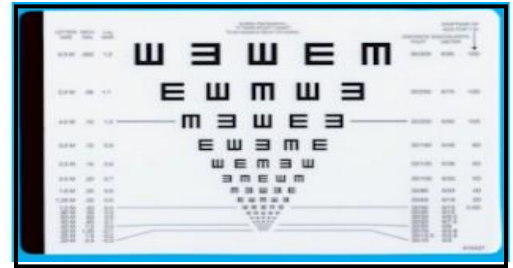
15436



Illuminated Near Number Card Insert

- Replaceable transparent insert for use with the Illuminated Test Card

15431



Illuminated Near E Card Insert

- Replaceable transparent insert for use with the Illuminated Test Card

15437



Illuminated Near HOTV Card Insert

- Replaceable transparent insert for use with the Illuminated Test Card

15439 -

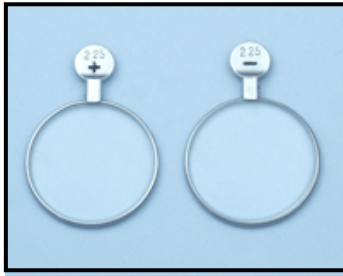


Illuminated 3m Letter Card Insert

- Replaceable transparent insert for use with the Illuminated Test Card

15435 -

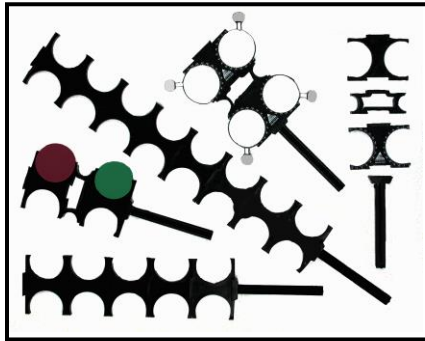
Trial Lenses / Flippers



38mm Trial Lenses

- Available in plus and minus powers: .12, .25, .37, .5, .62, .75, 1.00, 1.25, 1.5, 1.75, 2.00, 2.25, 2.50, 2.75, 3, 3.25, 3.50, 3.75, 4, 4.50, 5, 5.50, 6, 6.50, 7, 7.50, 8, 9, 10, 12 / Cylinder lenses: .12, .25, .37, .50, .62, .75, 1.00, 1.25, 1.50, 1.75, 2.00, 2.25, 2.50, 3.00, 4.00, 5.00, 6.00, 7.00, 8.00 / Prism lenses: .5, 1, 2, 3, 4, 5, 6, 7, 8, 9, 10, 12

11150 -



Lens Holders –(lenses not included)

- 15142 - Lens Holder
- 15143 – Lens Holder w/axis
- 15141 – Nose Bridge
- 15140 – Handle
- 15144 – 4 Well
- 15145 – 8 Well
- 12301- 38mm Red/Green Maddox



Jackson Crossed Cylinder

- Set of two

11133 – +0.25 & +0.50

11134 - +0.75 & +1.00

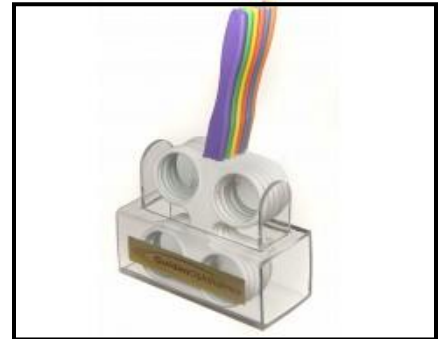


Maddox Trial Lens w/Handle

- Easy to rotate and can be used in well flippers
- Available in a standard size of 38mm diameter

11137– White

11136 – Red



Color Flipper Set

- Six standard Powers
- Color coded
- Easy to identify power

11123 -

11122 – Stand only



Flippers

- Measure 8 ½" long by 3 ½" wide
- Made of durable plastic with glass lenses

11132 – (4 lens)

Trial Lenses / Flippers



Raff Level Trial Flipper

- Balance prescriptions with a level to eliminate off axis rotation
- Use to balance cylinder and prismatic corrections

15156



Child Trial Frame

- Holds 3 lenses in front and 1 lens behind the frame
- PD range 27mm-35mm on each side
- Fully adjustable

11153-



Pediatric Trial Frames

- Holds 3 lenses in front and 1 lens behind the frame
- PD range 27mm-35mm on each side

11154



Universal Trial Frame

- Holds 3 lenses in front and 1 lens behind the frame
- PD range 24mm-40mm on each side
- Fully adjustable

11151-



Universal Trial Frame LW

- Holds 3 lenses in front and 1 lens behind the frame
- PD range 27mm-33mm on each side
- Fully adjustable

11152-

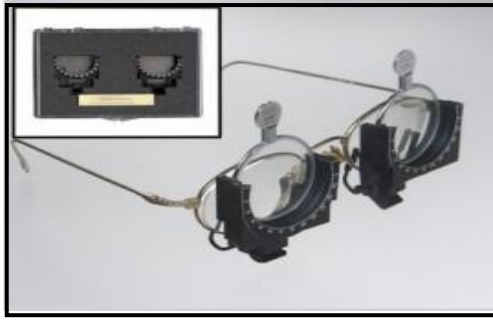


Trial Lens Multi-Pinhole Occluder

- 5 pinhole sizes from 8mm to 1.5mm
- The smaller pinholes provide routine acuity testing while the larger pinholes provide for testing suspected reduced vision

15104-

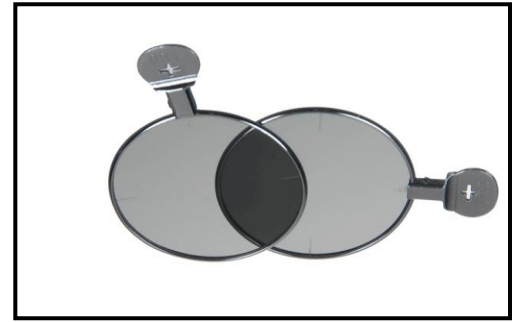
Trial Lenses / Flippers



Opto Clip

- Clips on top or bottom of glasses
- Holds four lenses each
- Flip up top or flip down bottom

15323-

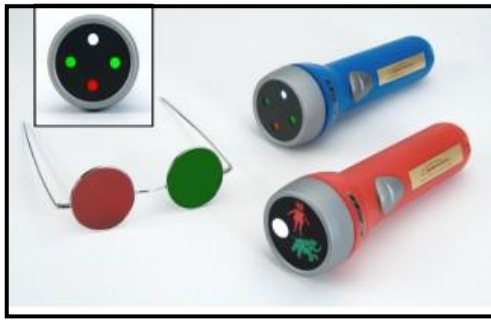


Polarized Trial Lens

- Polarized trial lenses to be used in trial frames

11149-

Vision Screening Tools



LED Worth Four Dot Test

- High durable quality
- Reversible red and green glasses
- Batteries included

15304-



Optokinetic Drum

- Test for nystagmus
- Measure 4" high by 6" diameter
- Used for adult or children

15360-

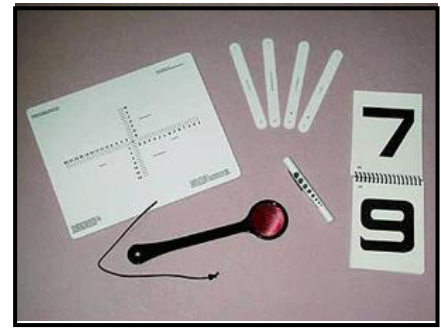


Red & Green Wrap Around Glasses

- Stylish attractive design
- No side light interference
- Snug fit around head

15316 – Adult

15317 – Child



Adult Screening Kit

- Excellent for vision therapy
- Includes eye alignment near card, maddox rod, fixation sticks, chronister pocket acuity card, and a reusable penlight

15310-



Fixation Sticks

- Used for detailed accommodation stimulation targets
- Precisely calibrated for saccade testing

15302- 4 Pack

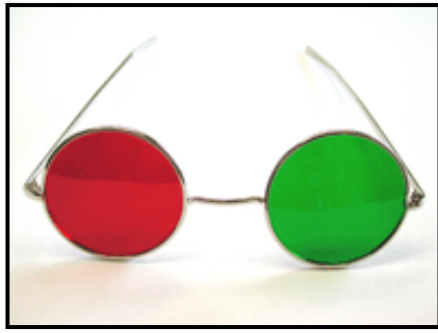


Red & Green Black Frame Glasses

- Accurate color canceling
- Used for accurate cancellation of The Worth 4 Dot, The Three Character Test, The Lancaster Red-Green Tests, and The Hess Screen Tests colors

15320- 6 Pack

Vision Screening Tools



Red & Green Metal Frame Spectacles

- Accurate color canceling
- Reversible metal frame
- Used for accurate cancellation of The Worth 4 Dot, The Three Character Test, The Lancaster Red-Green Tests, and The Hess Screen Tests colors
- Comes in a soft silk pouch

15105



Tangent Screen

- Provides a very accurate method of charting the central and para-central field of vision
- All markings are stitched in semi-visible black thread showing concentric circles, radial lines and blind spots
- Kit includes the screen, wand and a test object

11200-



Maddox Phoria Measure

- Combines large 25mm aperture, a red maddox mounted perpendicular to the handle in a 10PD prism in a rotating disc with knurled edge
- Designed to measure anisophoria
- Comes in a leather pouch

12136-

1-800-263-3557

Sacor Inc.